

043486

RECEIVED  
LARAMIE COUNTY  
CHEYENNE, WY.

CERTIFIED LAND CORNER RECORDATION

'88 MAY 5 PM 1 29

DESCRIPTION OF CORNER EVIDENCE FOUND, AND ORIGINAL RECORD (if known)  
Found no evidence of previous monumentation.

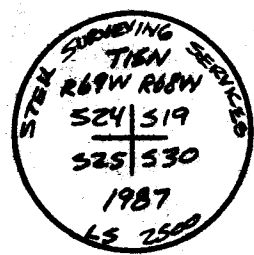
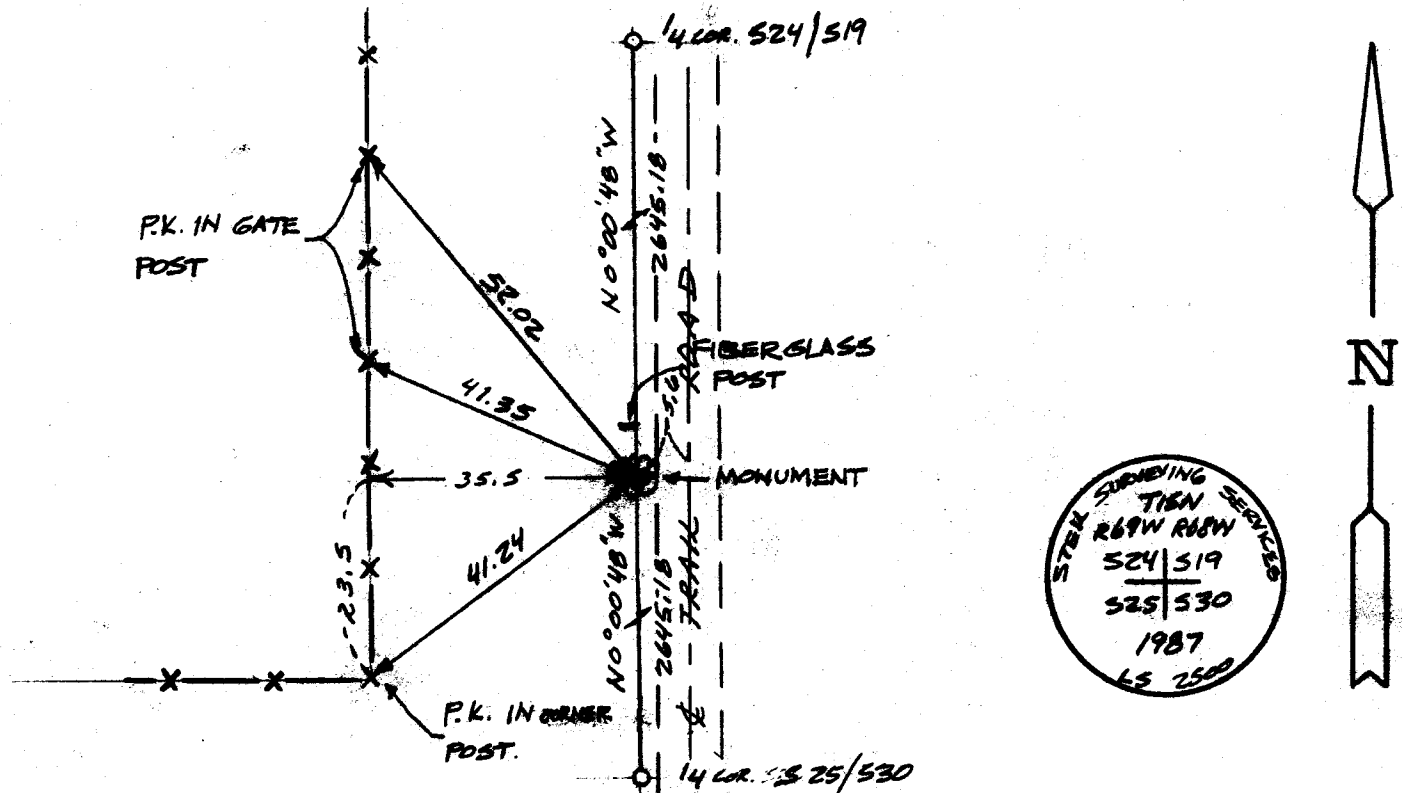
S.24 S.19  
S.25 S.30  
T.15N.  
R.69W., R.68W.  
6th P.M.

G.L.O. Record: Granite boulder 17" x 8" x 7"

DESCRIPTION OF MONUMENT AND ACCESSORIES ESTABLISHED  
TO PERPETUATE THE ORIGINAL LOCATION OF THIS CORNER:

At the corner: Set 3" x 30" aluminum pipe with 3 1/2" aluminum cap projecting 0.4 feet above ground with a collar of stone and stamped as shown below at single proportion distance along township line.  
Accessories : See ties below.

SKETCH, WITH COURSE AND DISTANCE TO ADJACENT CORNER IF DETERMINED IN THIS SURVEY.  
(May Sketch or Paste Reproduction on Reverse Side.)



I, John A. Steil certify that I have carefully performed or reviewed the work done on the diagrammed corner as reported on this recordation form and approve the same.

John A. Steil  
Signature of Surveyor

L.S. 2500  
Registration No.

STATE OF WYOMING,  
Office of Clerk and Recorder,  
County of Laramie

This "corner record" was filed for record on the 5th day of May, 1988, was noted on the cross-index plat and is assigned page No. 3002, in book No. 1259.

Janet C. Whitcomb  
County Official

Cross Index No. <u>R-1</u>	T. <u>15N</u>	R. <u>68W</u>	Mer. <u>6th</u>
<u>R-25</u>	T. <u>15N</u>	R. <u>69W</u>	Mer. <u>6th</u>
_____	T. _____	R. _____	Mer. _____
_____	T. _____	R. _____	Mer. _____
_____	T. _____	R. _____	Mer. _____
_____	T. _____	R. _____	Mer. _____
_____	T. _____	R. _____	Mer. _____